

PRODUCT INFORMATION

Product name : TUBGCP2 antibody

Product type : Primary antibodies

Description : Rabbit polyclonal to TUBGCP2

Immunogen : 3 synthetic peptides (human) conjugated to KLH

Reacts with : Human, Mouse

Tested applications : ELISA, WB & IF

GENE INFORMATION

Gene Symbol : TUBGCP2

Gene Name : tubulin, gamma complex associated protein 2

Ensembl ID : ENSG00000130640

Entrez GeneID : 10844

GenBank Accession number : AF042379

Swiss-Prot : Q9BSJ2

Molecular weight of TUBGCP2 : 102.5kDa

Function : Gamma-tubulin complex is necessary for microtubule nucleation at the centrosome.

Expected subcellular localization : Cytoplasm › cytoskeleton › microtubule organizing center › centrosome.

Expected tissue specificity: Ubiquitously expressed.

APPLICATION NOTE

Recommended dilution :

- **ELISA:** Antibody specificity was verified by direct ELISA against the 3 immunogen peptides. A minimum titer of 1/50000 is determined for one of the three peptides. Appropriate specificity controls were run.
- **WB:** 1/100.
- **IF:** 1/100.

Optimal dilutions/concentration should be determined by the end user.

Raised in : Rabbit

Clonality : Polyclonal

Isotype : IgG

Purity : Crude serum, final bleed

Storage buffer : Crude serum containing 0.1% Azide

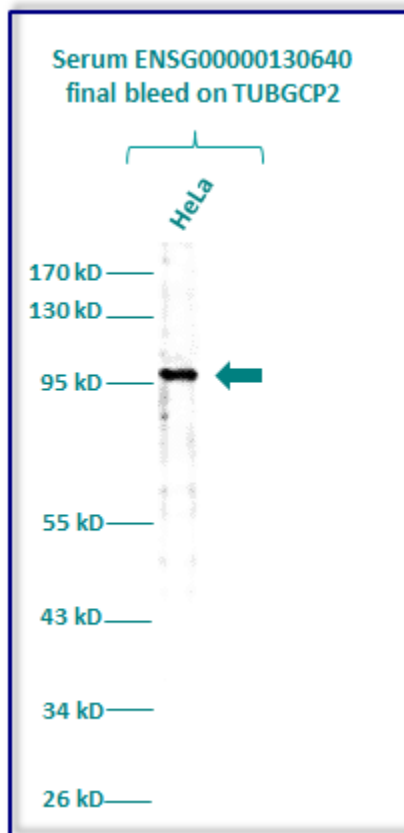
Form : Liquid

Storage instruction : Store at -20°C or -80°C. Avoid repeated freeze / thaw cycles.

WESTERN BLOT ON CELL LYSATE

Western blot analysis of TUBGCP2 expression in protein extract of HeLa (Human cervix adenocarcinoma) cell line. The serum ENSG00000130640 has been tested at 1/100.

Molecular weight of TUBGCP2 : 102.5.



Gel concentration: 5%

Blocking: in 5% non-fat milk-PBST solution

1st Antibody: The antibodies are diluted in blocking buffer.

- Dilute the serum ENSG0000091010 at 1:100
- 60 minutes of incubation**

2nd Antibody: The antibody is diluted in blocking buffer.

- Dilute the anti-Rabbit IgG HRP conjugated at 1/10000
- 60 minutes of incubation**

IMMUNOFLUORESCENCE ANALYSIS

Immunofluorescence analysis of TUBGCP2 expression in HeLa (Human cervix adenocarcinoma) cell line. The serum ENSG00000130640 has been tested at 1/100.

Blue staining : nucleus (Hoechst)

Red staining : cytoskeleton (microtubules/ α -tubuline)

Green staining : anti-TUBGCP2 antibody

Expected subcellular localization : Cytoplasm › cytoskeleton › microtubule organizing center › centrosome.

Expected tissue specificity: Ubiquitously expressed.

