

PRODUCT INFORMATION

Product name : TFCP2L1 antibody

Product type : Primary antibodies

Description : Rabbit polyclonal to TFCP2L1

Immunogen : 3 synthetic peptides (human) conjugated to KLH

Reacts with : Hu, Ms

Tested applications : ELISA, WB and IF

GENE INFORMATION

Gene Symbol : TFCP2L1

Gene Name : transcription factor CP2-like 1

Ensembl ID : ENSG00000115112

Entrez GeneID : 29842

GenBank Accession number : AF198488

Omim ID : 609785

Swiss-Prot : Q9NZI6

Molecular weight of TFCP2L1 : 54.6 kDa

Function : Transcriptional suppressor. May suppress UBP1-mediated transcriptional activation. Modulates the placental expression of CYP11A1.

Expected subcellular localization : Nucleus

Expected tissue specificity : Highly expressed in placental JEG-3 cells and very low levels of expression in non-steroidogenic cells. No expression was seen in adrenal NCI-H295A cells or in adrenal tissue.

APPLICATION NOTE

Recommended dilution :

- **ELISA:** Antibody specificity was verified by direct ELISA against the 3 immunogen peptides. A titer of 1/1500 has been determined. Appropriate specificity controls were run.
- **WB:** 1/750.
- **IF:** 1/500.

Optimal dilutions/concentration should be determined by the end user.

Raised in : Rabbit

Clonality : Polyclonal

Isotype : IgG

Purity : Purified antibody

Storage buffer : 0.5 X PBS, containing a final concentration of 50% Glycerol, 0.1% BSA and 0.01% Thimerosal.

Form : Liquid

Storage instruction : Store at -20°C or -80°C. Avoid repeated freeze / thaw cycles

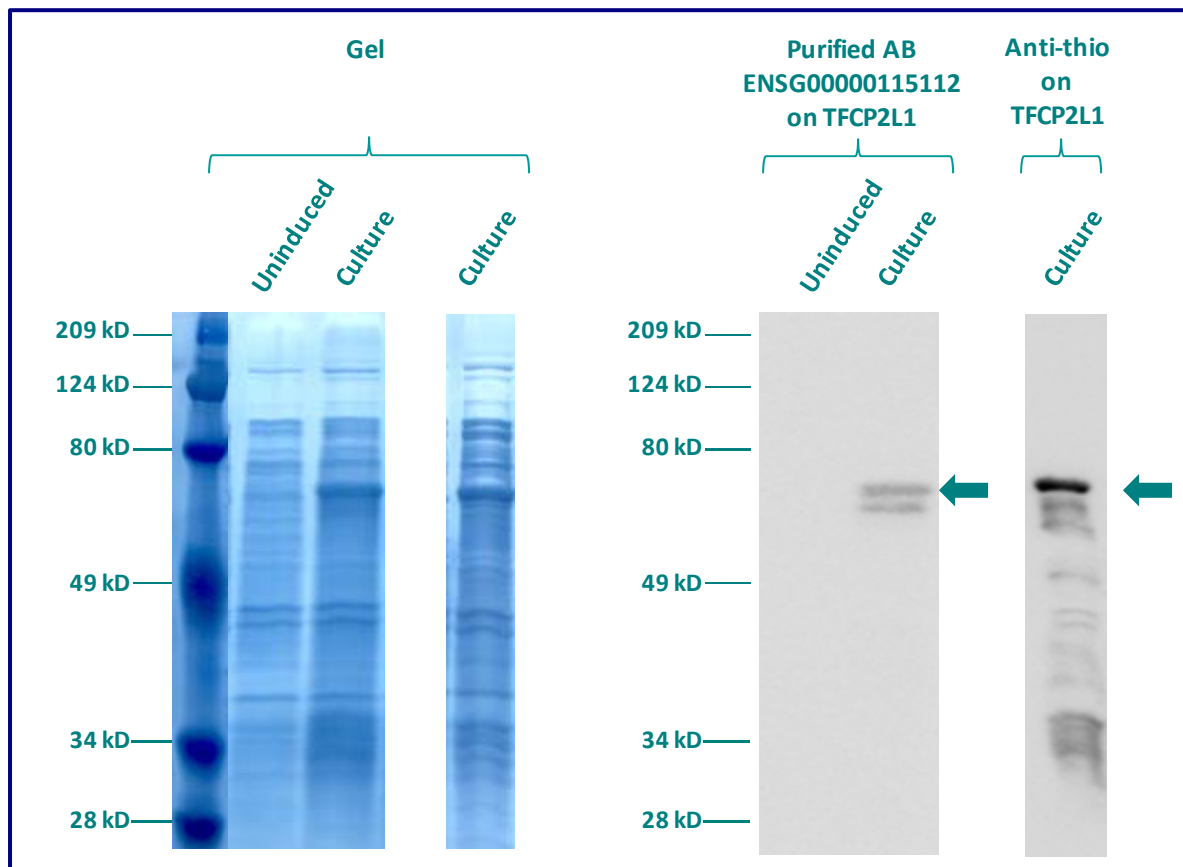
WESTERN BLOT ON RECOMBINANT PROTEIN

The purified antibody ENSG00000115112 has been tested at 1/1500 on uninduced (negative control) and induced culture of E.coli (one shot Top10 competent cells).

An anti-thio (positive control) has been tested at 1/5000 on uninduced (negative control) and induced culture of E.coli (one shot Top10 competent cells) as a positive control.

Plasmid name : pBAD-DEST49.

Molecular weight of TFCP2L1 : 68.6kDa (54.6kDa + another 14kDa for the tag).



Gel concentration: 10%

Blocking: in 5% non-fat milk-PBST solution

1st Antibody: The antibodies are diluted in blocking buffer.

- Dilute the purified antibody ENSG00000115112 at 1:750
- Dilute the anti-thio at 1:5000

60 minutes of incubation

2nd Antibody: The antibody is diluted in blocking buffer.

- Dilute the anti-Rabbit IgG HRP conjugated at 1/10000
- 60 minutes of incubation

IMMUNOFLUORESCENCE ANALYSIS

Immunofluorescence analysis of Transcription factor CP2-like protein 1 (TFCP2L1) expression in 5 cells lines (HELA, 293T/17, Capan-2, SAOS-2, SH-SY5Y). The purified Antibody ENSG00000115112 has been tested at 1/1000.

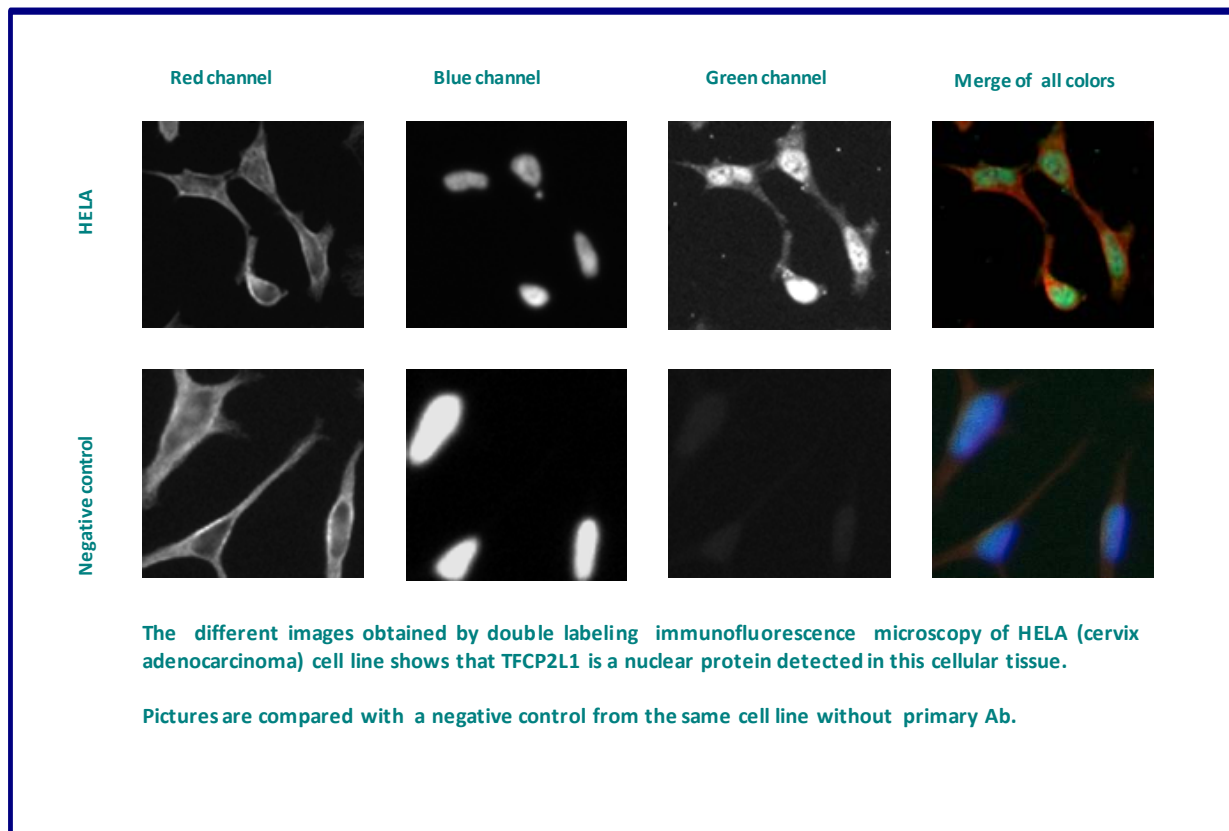
Red staining : cytoskeleton (microtubules/ α -tubuline)

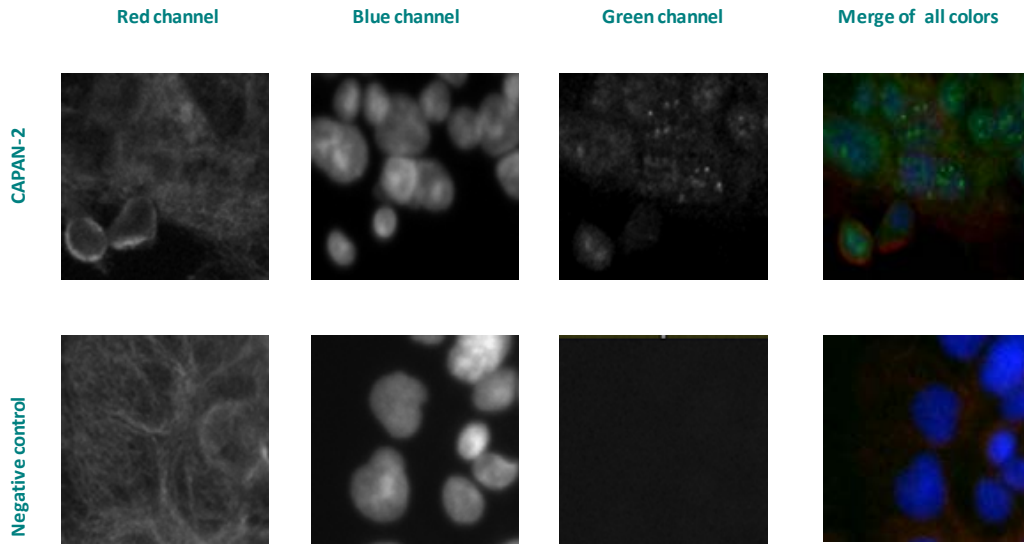
Blue staining : nucleus (Hoechst)

Green staining : anti- TFCP2L1 antibody (purified)

Expected subcellular location : Nucleus

Expected tissue specificity : Highly expressed in placental JEG-3 cells and very low levels of expression in non-steroidogenic cells. No expression was seen in adrenal NCI-H295A cells or in adrenal tissue





The different images obtained by double labeling immunofluorescence microscopy of CAPAN- 2 (Pancreas adenocarcinoma) cell line shows that TFCP2L1 is a nuclear protein detected in this cellular tissue.

Pictures are compared with a negative control from the same cell line without primary Ab.

Remaining cell lines tested gave a positive result with a nuclear distribution.