

PRODUCT INFORMATION

Product name : SIX4 antibody

Product type : Primary antibodies

Description : Rabbit polyclonal to SIX4

Immunogen : 3 synthetic peptides (human) conjugated to KLH

Reacts with : Human, Mouse

Tested applications : ELISA, WB and IF

GENE INFORMATION

Gene Symbol : SIX4

Gene Name : SIX homeobox 4

Ensembl ID : ENSG00000100625

Entrez GeneID : 51804

GenBank Accession number : AB024687

Omim ID : 606342

Swiss-Prot : Q9UIU6

Molecular weight of SIX4: 82.9kDa

Expected subcellular localization : Nucleus

APPLICATION NOTE

Recommended dilution :

- **ELISA:** Antibody specificity was verified by direct ELISA against the 3 immunogen peptides. A minimum titer of 1/ 10000 is determined. Appropriate specificity controls were run.
- **WB:** 1:5000
- **IF:** 1/1000.

Optimal dilutions/concentration should be determined by the end user.

Raised in : Rabbit

Clonality : Polyclonal

Isotype : IgG

Purity : Purified Antibody

Storage buffer : 0.5% X PBS containing a final concentration of 50% Glycerol, 0.1% BSA and 0.01% Thimerosal.

Form : Liquid

Storage instruction : Store at -20°C or -80°C. Avoid repeated freeze / thaw cycles.

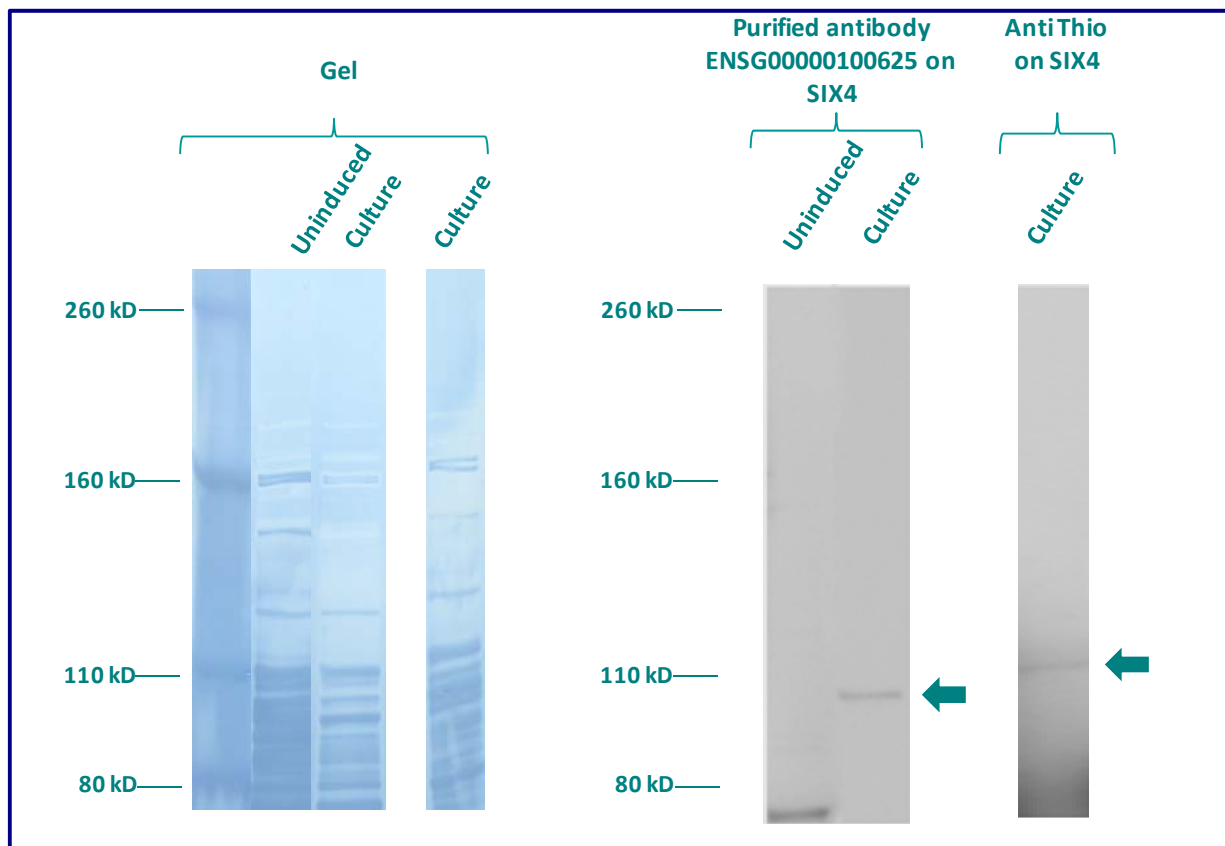
WESTERN BLOT ON RECOMBINANT PROTEIN

The purified antibody ENSG00000100625 has been tested at 1/10000 on uninduced (negative control) and induced culture of E.coli (one shot Top10 competent cells).

An anti-Thio (positive control) has been tested at 1/5000 on uninduced (negative control) and induced culture of E.coli (one shot Top10 competent cells) as a positive control.

Plasmid name : pBAD-DEST49.

Molecular weight of SIX4 : 94.8kDa (80.8kDa + another 14kDa for the tag).



Gel concentration: 5%

Blocking: in 5% non-fat milk-PBST solution

1st Antibody: The antibodies are diluted in blocking buffer.

- Dilute the purified antibody ENSG00000100625 at 1: 5000
- Dilute the anti-thio at 1:5000

60 minutes of incubation

2nd Antibody: The antibody is diluted in blocking buffer.

- Dilute the anti-Rabbit IgG HRP conjugated at 1/10000
- 60 minutes of incubation

IMMUNOFLUORESCENCE ANALYSIS

Immunofluorescence analysis of Homeobox protein SIX4 (SIX4) expression in 2 cells lines (HELA, Capan-2). The purified Antibody ENSG00000100625 has been tested at 1/5000.

Red staining : cytoskeleton (microtubules/ α -tubuline)

Blue staining : nucleus (Hoechst)

Green staining : anti- SIX4 antibody (purified)

Expected subcellular location : Nucleus

