

PRODUCT INFORMATION

Product name : NUMA1 antibody

Product type : Primary antibodies

Description : Rabbit polyclonal to NUMA1

Immunogen : 3 synthetic peptides (human) conjugated to KLH

Reacts with : Human, Mouse

Tested applications : ELISA , WB and IF

GENE INFORMATION

Gene Symbol : NUMA1

Gene Name : nuclear mitotic apparatus protein 1

Ensembl ID : ENSG00000137497

Entrez GeneID : 4926

GenBank Accession number : Z11584

Swiss-Prot : Q14980

Molecular weight of NUMA1: 238.3 & 236.5kDa

Function : Highly abundant component of the nuclear matrix where it may serve a non-mitotic structural role, occupies the majority of the nuclear volume. Required for maintenance and establishment of the mitotic spindle poles, functioning as a tether linking bulk microtubules of the spindle to centrosomes. May be involved in coordination of the alignment of the mitotic spindle to the cellular polarity axis, which is a prerequisite for asymmetric cell divisions.

Expected subcellular localization : Nucleus matrix. Chromosome. Cytoplasm › cytoskeleton › spindle pole.

Note: Resides in the nuclear matrix during interphases. Dissociates from condensing chromosomes during early prophase, and relocates to the spindle poles via dynein/dynamin association, it remain there until the anaphase onset. Before the complete disintegration of the nuclear lamina. As mitosis progresses it reassociates with telophase chromosomes very early during nuclear reformation, before substantial accumulation of lamins on chromosomal surfaces is evident.

APPLICATION NOTE

Recommended dilution :

- **ELISA:** Antibody specificity was verified by direct ELISA against the 3 immunogen peptides. A minimum titer of 1/ 31000 is determined. Appropriate specificity controls were run.
- **WB:** 1: 1000
- **IF:** 1/100.

Optimal dilutions/concentration should be determined by the end user.

Raised in : Rabbit

Clonality : Polyclonal

Isotype : IgG

Purity : Purified Antibody

Storage buffer : 0.5 X PBS containing a final concentration of 50% Glycerol, 0.1% BSA and 0.01% Thimerosal.

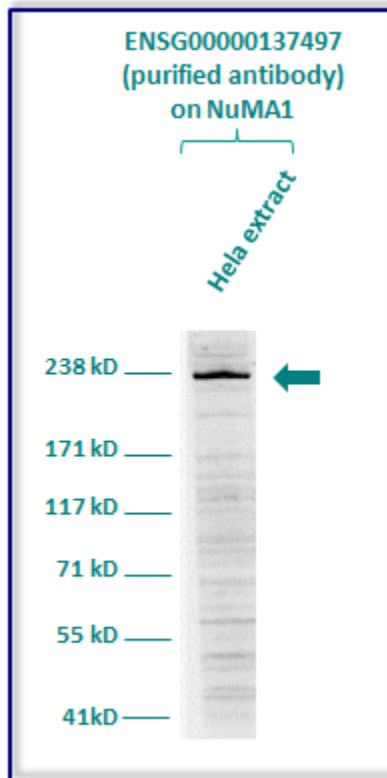
Form : Liquid

Storage instruction : Store at -20°C or -80°C. Avoid repeated freeze / thaw cycles.

WESTERN BLOT ON CELL LINE

Western blot analysis of NuMA1 expression in protein extract of HeLa (Human cervix adenocarcinoma) cell line. The purified antibody ENSG00000137497 has been tested at 1/1000.

Molecular weight of NUMA1 : 238.3 & 236.5kDa



1st Antibody: The antibodies are diluted in pbs-TWEEN 0.05%.

- Dilute the purified antibody ENSG0000052850 at 1: 1000

IMMUNOFLUORESCENCE ANALYSIS

Immunofluorescence analysis of NUMA1 expression in HeLa (Human cervix adenocarcinoma) cell line. The purified antibody ENSG00000137497 has been tested at 1:100.

Blue staining : nucleus

Green staining : cytoskeleton (microtubules/ α -tubuline)

Red staining : anti-NUMA1 antibody

Expected subcellular localization : Nucleus. Chromosome .

Note: Dissociates from condensing chromosomes during early prophase, before the complete disintegration of the nuclear lamina. As mitosis progresses it reassociates with telophase chromosomes very early during nuclear reformation, before substantial accumulation of lamins on chromosomal surfaces is evident.

