

PRODUCT INFORMATION

Product name : MCRS1 antibody

Product type : Primary antibodies

Description : Rabbit polyclonal to MCRS1

Immunogen : 3 synthetic peptides (Human) conjugated to KLH

Reacts with : Human, Mouse

Tested applications : ELISA, WB and IF

GENE INFORMATION

Gene Symbol : MCRS1

Gene Name : microspherule protein 1

Ensembl ID : ENSG00000187778

Entrez GeneID : 10445

GenBank Accession number : BC011794

Swiss-Prot : Q96EZ8

Molecular weight of MCRS1 : 50.4, 51.8 and 53kDa

Function : Modulates the transcription repressor activity of DAXX by recruiting it to the nucleolus. As part of the NSL complex it may be involved in acetylation of nucleosomal histone H4 on several lysine residues. Putative regulatory component of the chromatin remodeling INO80 complex which is involved in transcriptional regulation, DNA replication and probably DNA repair. May also be an inhibitor of TERT telomerase activity.

Expected subcellular localization : Nucleus › nucleolus (In microspherules in the nucleolus).

Expected tissue specificity: Detected in testis, and at lower levels in spleen, thymus, prostate, uterus, small intestine, colon and leukocytes.

APPLICATION NOTE

Recommended dilution :

- **ELISA:** Antibody specificity was verified by direct ELISA against the 3 immunogen peptides. A minimum titer of 1/3000 is determined for one of the three peptides. Appropriate specificity controls were run.
- **WB:** 1/100.
- **IF:** 1/100.

Optimal dilutions/concentration should be determined by the end user.

Raised in : Rabbit

Clonality : Polyclonal

Isotype : IgG

Purity : Crude serum, final bleed

Storage Buffer: Crude serum.

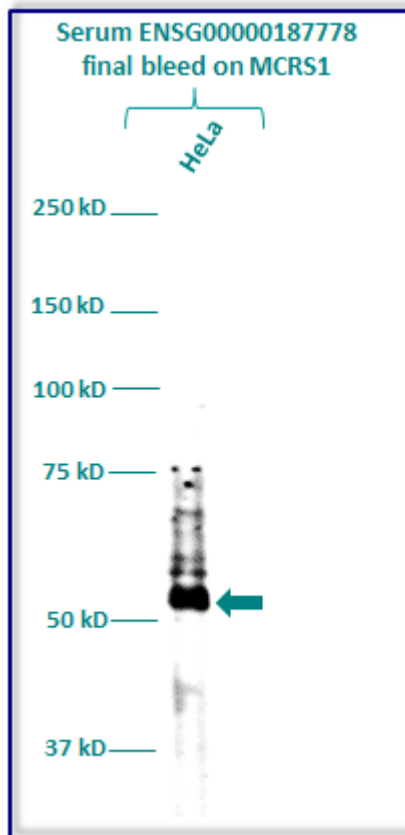
Form : Liquid

Storage instruction : Store at -20°C or -80°C. Avoid repeated freeze / thaw cycles.

WESTERN BLOT ON HUMAN CELL LINE

Western blot analysis of MCRS1 expression in protein extract of HeLa (Human cervix adenocarcinoma) cell line. The serum ENSG00000187778 has been tested at 1/100.

Molecular weight of MCRS1 : 50.4, 51.8 and 53kDa



Gel concentration: 10%

Blocking: 60 minutes at RT in 5% non-fat milk-PBST solution

1st Antibody: The antibody is diluted in blocking buffer.

Dilute serum at 1:100 in Blocking buffer

60 minutes of incubation

2nd Antibody: The antibody is diluted in blocking buffer.

Dilute the anti-Rabbit IgG HRP conjugated at 1/1000

60 minutes of incubation

IMMUNOFLUORESCENCE ANALYSIS

Immunofluorescence analysis of Microspherule protein 1 (MCRS1) expression in 5 cells lines (HELA, 293T/17, SAOS-2, SH-SY5Y, Skin 3,44). The crude serum ENSG00000187778 has been tested at 1/100.

Red staining : cytoskeleton (microtubules/ α -tubuline)

Blue staining : nucleus (Hoechst)

Green staining : anti- MCRS1 antibody

Expected subcellular location : Nucleus. Nucleus > nucleolus. Note: In microspherules in the nucleolus

Expected tissue specificity : Detected in testis, and at lower levels in spleen, thymus, prostate, uterus, small intestine, colon and leukocytes.

