

## **PRODUCT INFORMATION**

---

**Product name : mCPEB4 antibody**

**Product type : Primary antibodies**

**Description : Rabbit polyclonal to mCPEB4**

**Immunogen : 3 synthetic peptides (human) conjugated to KLH**

**Reacts with : Human, Mouse**

**Tested applications : ELISA and WB**

## **GENE INFORMATION**

---

**Gene Symbol : mCPEB4**

**Gene Name : cytoplasmic polyadenylation element binding protein 4**

**Ensembl ID : ENSMUSG00000020300**

**Entrez GeneID : 80315**

**GenBank Accession number : BX538213**

**Molecular weight of mCPEB4 isoforms : 80.2, 78.3 & 36.2kDa**

## **APPLICATION NOTE**

---

### **Recommended dilution :**

- **ELISA:** Antibody specificity was verified by direct ELISA against the 3 immunogen peptides. A minimum titer of 1/3000 is determined. Appropriate specificity controls were run.
- **WB (cell line lysate):** 1/300.

**Optimal dilutions/concentration should be determined by the end user.**

**Raised in :** Rabbit

**Clonality :** Polyclonal

**Isotype :** IgG

**Purity :** Crude serum, Final bleed

**Storage buffer :** 50% glycerol containing a final concentration of 0.1% BSA and 0.01% Thimerosal.

**Form :** Liquid

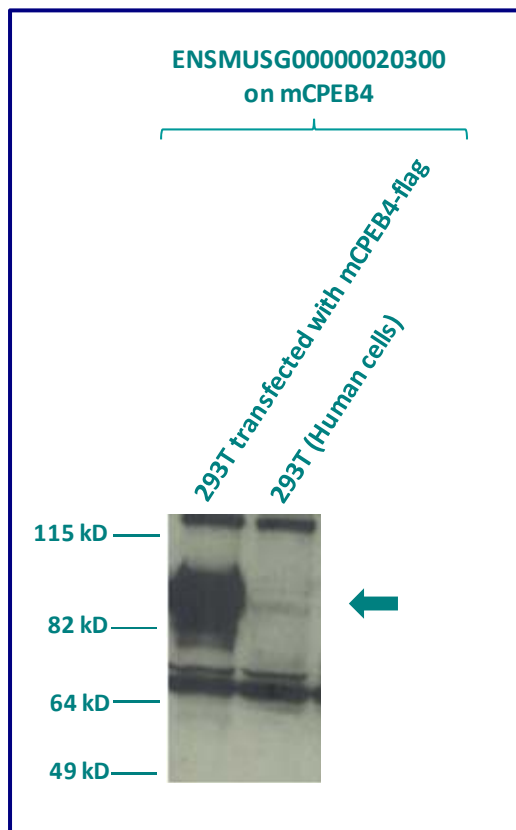
**Storage instruction :** Store at -20°C or -80°C. Avoid repeated freeze / thaw cycles.

## WESTERN BLOT ON CELL LYSATE

---

Western blot analysis of mCPEB4 expression in protein extracts of 293T human cells transfected with mCPEB4 flag & 293T cells. The serum ENSMUSG00000020300 has been tested at 1/300.

Molecular weight of mCPEB4 : 78.3kDa



**1<sup>st</sup> Antibody:** The antibodies are diluted in blocking buffer.

- Dilute the serum ENSG00000204103 at 1:300
- 60 minutes of incubation

**2<sup>nd</sup> Antibody:** The antibody is diluted in blocking buffer.

- Dilute the anti-Rabbit IgG HRP conjugated at 1/3000
- 60 minutes of incubation