

PRODUCT INFORMATION

Product name : KLF6 antibody

Product type : Primary antibodies

Description : Rabbit polyclonal to KLF6

Immunogen : 3 synthetic peptides (human) conjugated to KLH

Reacts with : Human, Mouse

Tested applications : ELISA , WB and IF

GENE INFORMATION

Gene Symbol : KLF6

Gene Name : Kruppel-like factor 6

Ensembl ID : ENSG00000067082

Entrez GeneID : 1316

GenBank Accession number : U51869

Omim ID : 602053

Swiss-Prot : Q99612

Molecular weight of KLF6: 30.6kDa

Function : Transcriptional activator. Binds a GC box motif. Could play a role in B-cell growth and development.

Expected subcellular localization : Nucleus

APPLICATION NOTE

Recommended dilution :

- **ELISA:** Antibody specificity was verified by direct ELISA against the 3 immunogen peptides. A minimum titer of 1/ 14000 is determined. Appropriate specificity controls were run.
- **WB:** 1:5000
- **IF:** 1/1000.

Optimal dilutions/concentration should be determined by the end user.

Raised in : Rabbit

Clonality : Polyclonal

Isotype : IgG

Purity : Purified Antibody

Storage buffer : 0.5 X PBS containing a final concentration of 50% Glycerol, 0.1% BSA and 0.01% Thimerosal.

Form : Liquid

Storage instruction : Store at -20°C or -80°C. Avoid repeated freeze / thaw cycles.

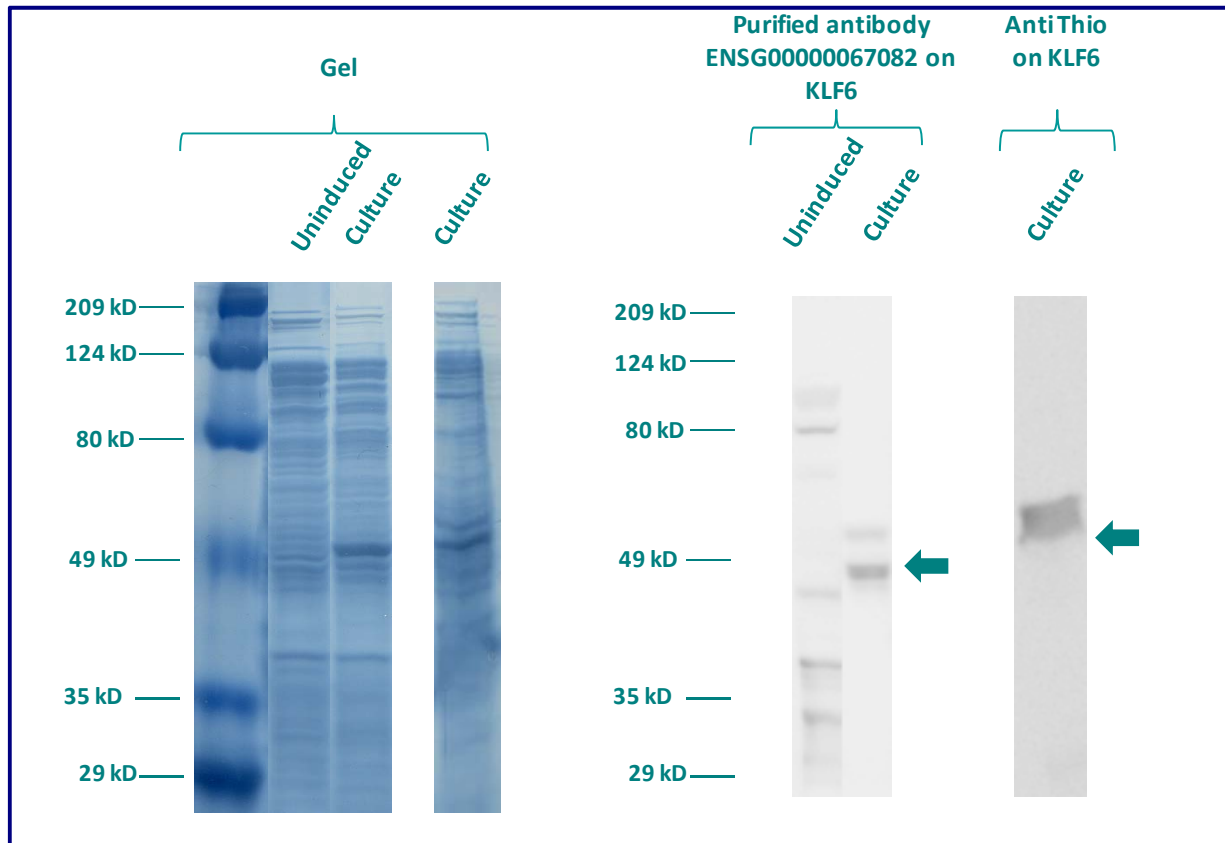
WESTERN BLOT ON RECOMBINANT PROTEIN

The purified antibody ENSG00000067082 has been tested at 1/10000 on uninduced (negative control) and induced culture of E.coli (one shot Top10 competent cells).

An anti-Thio (positive control) has been tested at 1/5000 on uninduced (negative control) and induced culture of E.coli (one shot Top10 competent cells) as a positive control.

Plasmid name : pBAD-DEST49.

Molecular weight of KLF6 : 45.9kDa (31.9kDa + another 14kDa for the tag).



Gel concentration: 10%

Blocking: in 5% non-fat milk-PBST solution

1st Antibody: The antibodies are diluted in blocking buffer.

- Dilute the purified antibody ENSG00000067082 at 1: 5000
- Dilute the anti-thio at 1:5000

60 minutes of incubation

2nd Antibody: The antibody is diluted in blocking buffer.

- Dilute the anti-Rabbit IgG HRP conjugated at 1/10000
- 60 minutes of incubation

IMMUNOFLUORESCENCE ANALYSIS

Immunofluorescence analysis of Krueppel-like factor 6 (KLF6) expression in 2 cells lines (Capan-2, Skin 3.44). The purified Antibody ENSG00000067082 has been tested at 1/5000.

Red staining : cytoskeleton (microtubules/ α -tubuline)

Blue staining : nucleus (Hoechst)

Green staining : anti- KLF6 antibody (purified)

Expected subcellular location : Nucleus

Expected tissue specificity : Highly expressed in placenta followed by spleen, thymus, prostate, testis, small intestine and colon. Weakly expressed in pancreas, lung, liver, heart and skeletal muscle. Also expressed in fetal brain, spleen and thymus.

