

PRODUCT INFORMATION

Product name : KLF3 antibody

Product type : Primary antibodies

Description : Rabbit polyclonal to KLF3

Immunogen : 3 synthetic peptides (human) conjugated to KLH

Reacts with : Human, Mouse

Tested applications : ELISA, WB and IF

GENE INFORMATION

Gene Symbol : KLF3

Gene Name : Kruppel-like factor 3 (basic)

Ensembl ID : ENSG00000109787

Entrez GeneID : 51274

GenBank Accession number : AF285837

Omim ID : 609392

Swiss-Prot : P57682

Molecular weight of KLF3 : 38.8kDa [Isoform 1]
 25.4kDa [Isoform 2]

Function : Binds to the CACCC box of erythroid cell-expressed genes. May play a role in hematopoiesis.

Expected subcellular localization : Nucleus

APPLICATION NOTE

Recommended dilution :

- **ELISA:** Antibody specificity was verified by direct ELISA against the 3 immunogen peptides. A minimum titer of 1/ 7000 is determined. Appropriate specificity controls were run.
- **WB:** 1/5000.
- **IF:** 1/1000.

Optimal dilutions/concentration should be determined by the end user.

Raised in : Rabbit

Clonality : Polyclonal

Isotype : IgG

Purity : Purified Antibody

Storage buffer : 0.5% X PBS containing a final concentration of 50% Glycerol, 0.1% BSA and 0.01% Thimerosal.

Form : Liquid

Storage instruction : Store at -20°C or -80°C. Avoid repeated freeze / thaw cycles.

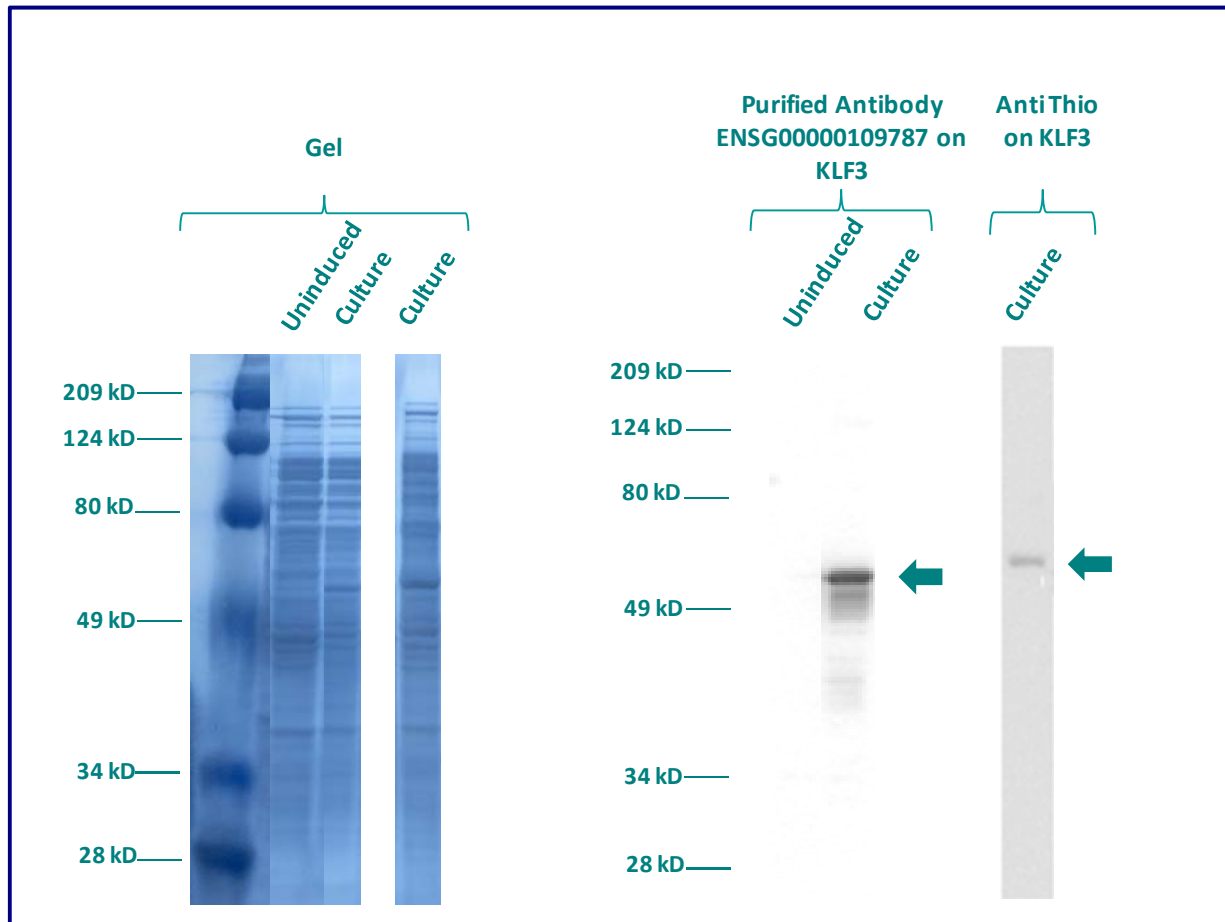
WESTERN BLOT ON RECOMBINANT PROTEIN

The purified antibody ENSG00000109787 has been tested at 1/20000 on uninduced (negative control) and induced culture of E.coli (one shot Top10 competent cells).

An anti-Thio (positive control) has been tested at 1/5000 on uninduced (negative control) and induced culture of E.coli (one shot Top10 competent cells) as a positive control.

Plasmid name : pBAD-DEST49.

Molecular weight of KLF3 : 52.8 (38.8 + another 14kDa for the tag).



Gel concentration: 10%

Blocking: in 5% non-fat milk-PBST solution

1st Antibody: The antibodies are diluted in blocking buffer.

- Dilute the purified antibody ENSG00000109787 at 1: 5000
- Dilute the anti-thio at 1:5000

60 minutes of incubation

2nd Antibody: The antibody is diluted in blocking buffer.

- Dilute the anti-Rabbit IgG HRP conjugated at 1/10000
- 60 minutes of incubation**

IMMUNOFLUORESCENCE ANALYSIS

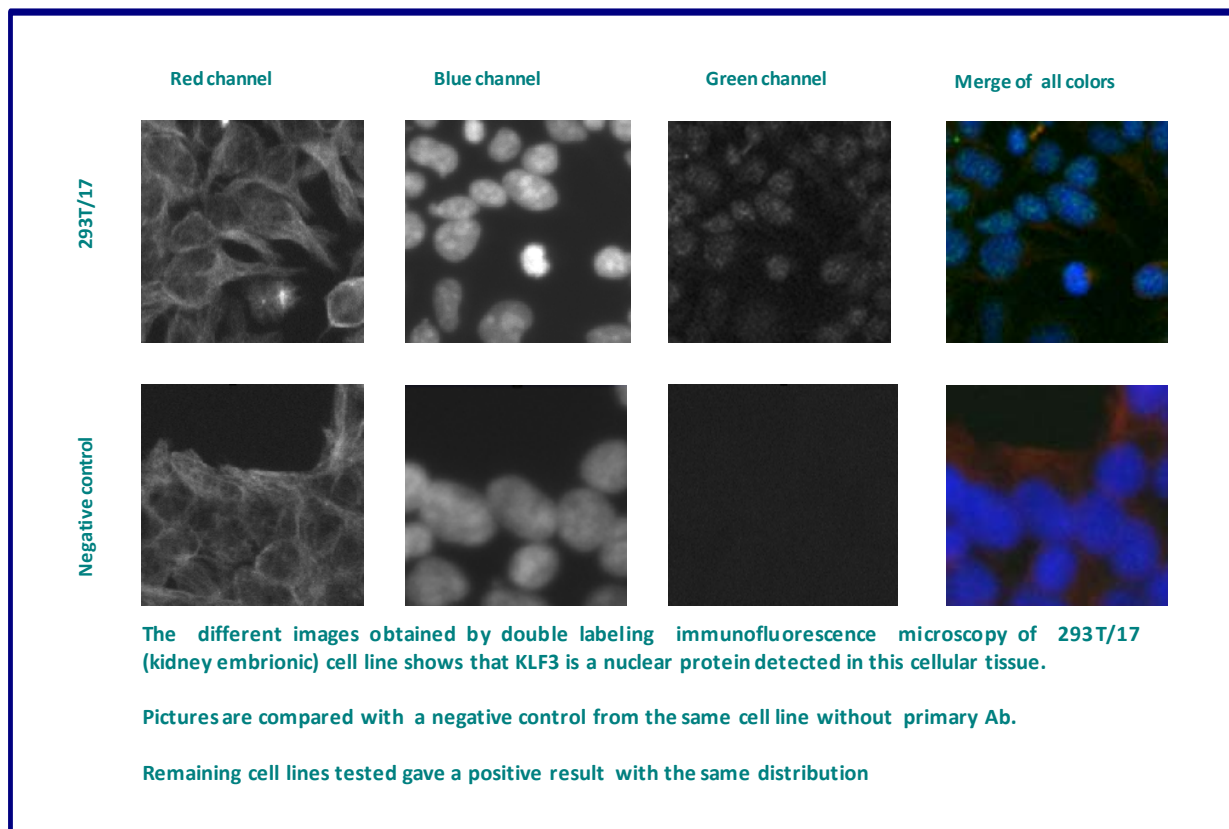
Immunofluorescence analysis of Krueppel-like factor 3 (KLF3) expression in 3 cells lines (293T/17, Capan-2, SH-SY5Y). The purified Antibody ENSG00000109787 has been tested at 1/5000.

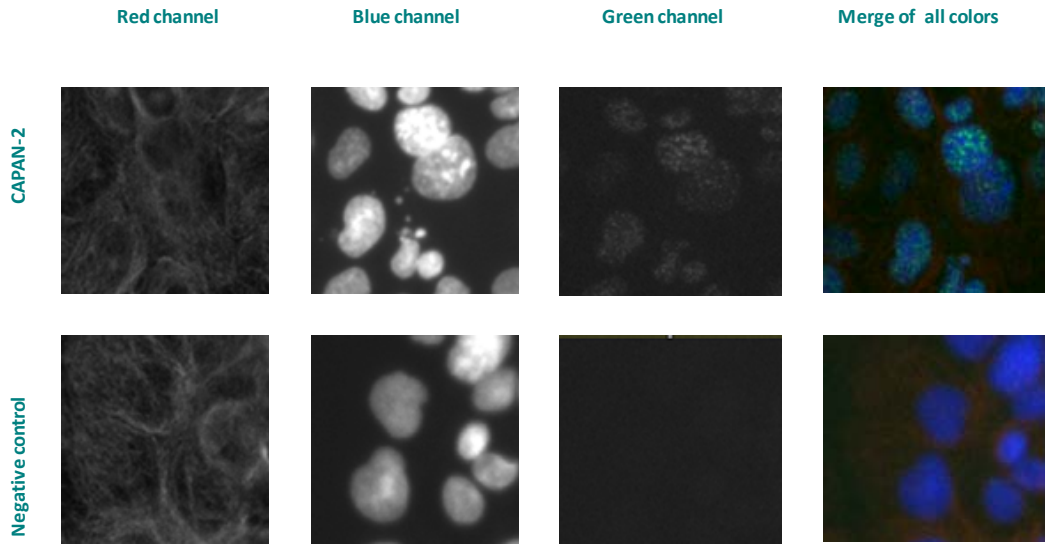
Red staining : cytoskeleton (microtubules/ α -tubuline)

Blue staining : nucleus (Hoechst)

Green staining : anti- KLF3 antibody (purified)

Expected subcellular location : Nucleus





The different images obtained by double labeling immunofluorescence microscopy of CAPAN-2 (Pancreas adenocarcinoma) cell line shows that KLF3 is a nuclear protein detected in this cellular tissue.

Pictures are compared with a negative control from the same cell line without primary Ab.