

PRODUCT INFORMATION

Product name : HLF antibody

Product type : Primary antibodies

Description : Rabbit polyclonal to HLF

Immunogen : 3 synthetic peptides (human) conjugated to KLH

Reacts with : Human, Mouse

Tested applications : ELISA, WB and IF

GENE INFORMATION

Gene Symbol : HLF

Gene Name : hepatic leukemia factor

Ensembl ID : ENSG00000108924

Entrez GeneID : 3131

Omim ID : 142385

Swiss-Prot : Q16534

Molecular weight of HLF : 33.2kDa

Expected subcellular localization : Nucleus.

Summary : This gene encodes a member of the proline and acidic-rich (PAR) protein family, a subset of the bZIP transcription factors. The encoded protein forms homodimers or heterodimers with other PAR family members and binds sequence-specific promoter elements to activate transcription. Chromosomal translocations fusing portions of this gene with the E2A gene cause a subset of childhood B-lineage acute lymphoid leukemias. Alternatively spliced transcript variants have been described, but their biological validity has not been determined [provided by RefSeq].

APPLICATION NOTE

Recommended dilution :

- **ELISA:** Antibody specificity was verified by direct ELISA against the 3 immunogen peptides. A minimum titer of 1/45000 is determined. Appropriate specificity controls were run.
- **WB:** 1/5000.
- **IF:** 1/1000.

Optimal dilutions/concentration should be determined by the end user.

Raised in : Rabbit

Clonality : Polyclonal

Isotype : IgG

Purity : Purified Antibody

Storage buffer : 0.5 X PBS containing a final concentration of 50% Glycerol, 0.01% BSA and 0.001% Thimerosal.

Form : Liquid

Storage instruction : Store at -20°C or -80°C. Avoid repeated freeze / thaw cycles.

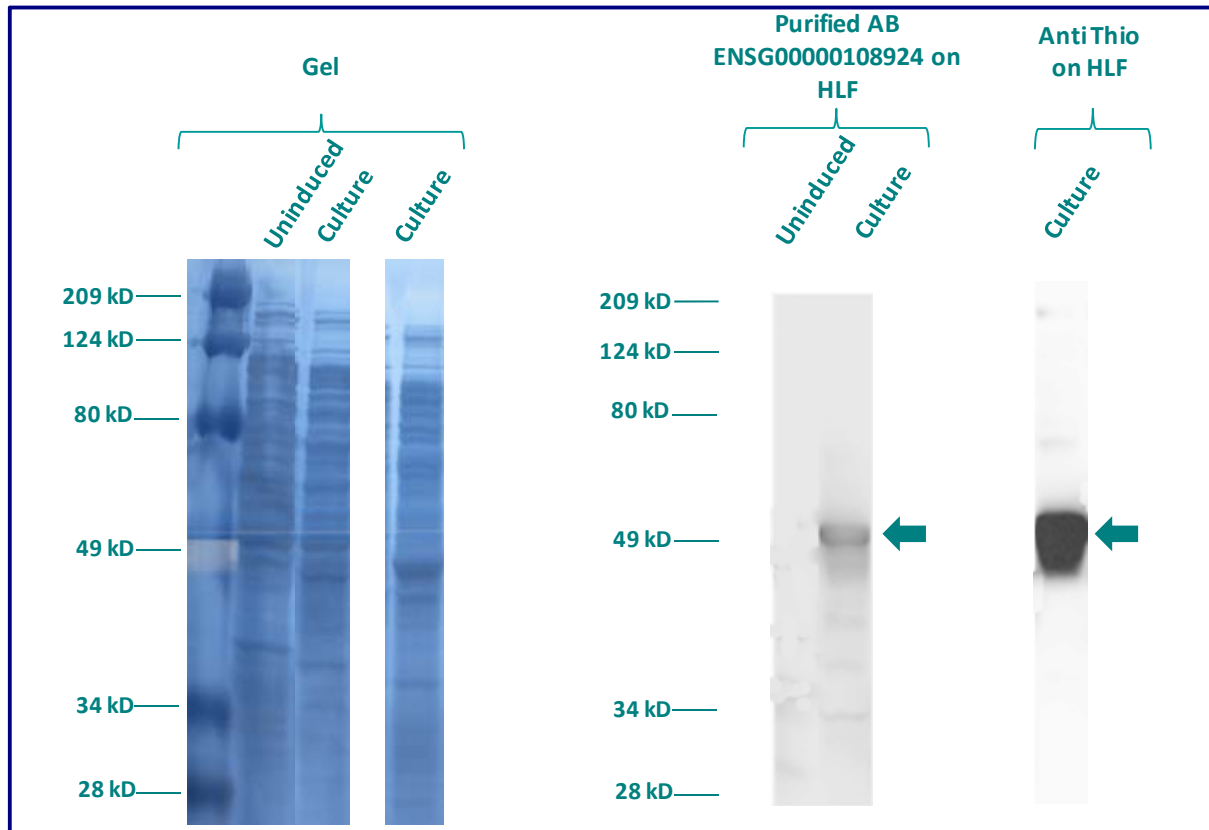
WESTERN BLOT ON RECOMBINANT PROTEIN

The purified antibody ENSG00000108924 has been tested at 1/10000 on uninduced (negative control) and induced culture of E.coli (one shot Top10 competent cells).

An anti-Thio (positive control) has been tested at 1/5000 on uninduced (negative control) and induced culture of E.coli (one shot Top10 competent cells) as a positive control.

Plasmid name : pBAD-DEST49.

Molecular weight of HLF : 47.2kDa (33.2kDa + another 14kDa for the tag).



Gel concentration: 10%

Blocking: in 5% non-fat milk-PBST solution

1st Antibody: The antibodies are diluted in blocking buffer.

- Dilute the purified antibody ENSG00000108924 at 1: 5000
- Dilute the anti-thio at 1:5000

60 minutes of incubation

2nd Antibody: The antibody is diluted in blocking buffer.

- Dilute the anti-Rabbit IgG HRP conjugated at 1/10000
- 60 minutes of incubation

IMMUNOFLUORESCENCE ANALYSIS

Immunofluorescence analysis of Hepatic leukemia factor (HLF) expression in 1 cell line (Skin 3.44). The purified Antibody ENSG00000108924 has been tested at 1/5000.

Red staining : cytoskeleton (microtubules/ α -tubuline)

Blue staining : nucleus (Hoechst)

Green staining : anti- HLF antibody (purified)

Expected subcellular location : Nucleus

Expected tissue specificity : Highly expressed in liver; lower levels in lung and kidney

