

PRODUCT INFORMATION

Product name : FOXN1 antibody

Product type : Primary antibodies

Description : Rabbit polyclonal to FOXN1

Immunogen : 3 synthetic peptides (human) conjugated to KLH

Reacts with : Human, Mouse

Tested applications : ELISA and WB

GENE INFORMATION

Gene Symbol : FOXN1

Gene Name : forkhead box N1

Ensembl ID : ENSG00000109101

Entrez GeneID : 8456

GenBank Accession number : Y11739

Omim ID : 600838

Swiss-Prot : O15353

Molecular weight of FOXN1: 68.9kDa

Function : Transcriptional regulator involved in development.

Expected subcellular localization : Nucleus

APPLICATION NOTE

Recommended dilution :

- **ELISA:** Antibody specificity was verified by direct ELISA against the 3 immunogen peptides. A minimum titer of 1/ 8000 is determined. Appropriate specificity controls were run.
- **WB:** 1:4000

Optimal dilutions/concentration should be determined by the end user.

Raised in : Rabbit

Clonality : Polyclonal

Isotype : IgG

Purity : Purified Antibody

Storage buffer : 0.5 X PBS containing a final concentration of 50% Glycerol, 0.1% BSA and 0.01% Thimerosal.

Form : Liquid

Storage instruction : Store at -20°C or -80°C. Avoid repeated freeze / thaw cycles.

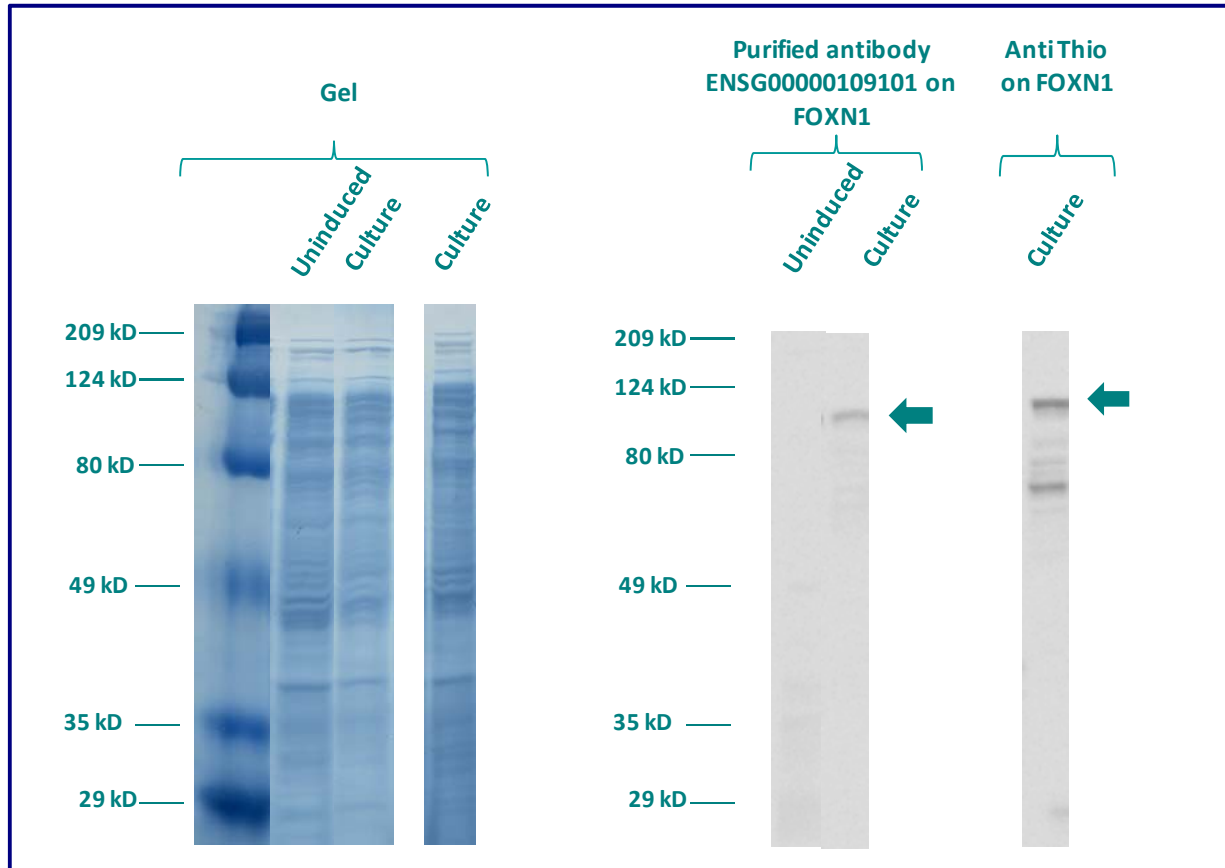
WESTERN BLOT ON RECOMBINANT PROTEIN

The purified antibody ENSG00000109101 has been tested at 1/5000 on uninduced (negative control) and induced culture of E.coli (one shot Top10 competent cells).

An anti-Thio (positive control) has been tested at 1/5000 on uninduced (negative control) and induced culture of E.coli (one shot Top10 competent cells) as a positive control.

Plasmid name : pBAD-DEST49.

Molecular weight of FOXN1 : 82.9kDa (68.9kDa + another 14kDa for the tag).



Gel concentration: 10%

Blocking: in 5% non-fat milk-PBST solution

1st Antibody: The antibodies are diluted in blocking buffer.

- Dilute the purified antibody ENSG00000109101 at 1: 4000
- Dilute the anti-thio at 1:5000

60 minutes of incubation

2nd Antibody: The antibody is diluted in blocking buffer.

- Dilute the anti-Rabbit IgG HRP conjugated at 1/10000
- 60 minutes of incubation