

PRODUCT INFORMATION

Product name : ERG1 antibody

Product type : Primary antibodies

Description : Mouse monoclonal to ERG1

Immunogen : 1 synthetic peptide (human) conjugated to KLH

Reacts with : Hu, Ms

Tested applications : ELISA, WB & IF

GENE INFORMATION

Gene Symbol : ERG1

Gene Name : early growth response 1

Ensembl ID : ENSG00000120738

Entrez GeneID : 1958

GenBank Accession number : M62829

Swiss-Prot : P18146

Molecular weight : 57.5kDa

Function : Transcriptional regulator. Recognizes and binds to the DNA sequence 5'-CGCCCCGC-3'(EGR-site). Activates the transcription of target genes whose products are required for mitogenesis and differentiation.

Expected subcellular localization : nucleus.

Summary : The protein encoded by this gene belongs to the EGR family of C2H2-type zinc-finger proteins. It is a nuclear protein and functions as a transcriptional regulator. The products of target genes it activates are required for differentiation and mitogenesis. Studies suggest this is a cancer suppressor gene. [provided by RefSeq]

APPLICATION NOTE

Recommended dilution :

- **ELISA:** Antibody specificity was verified by direct ELISA against the 1 immunogen peptide. A titer of 30000 has been determined. Appropriate specificity controls were run.
- **WB:** Dilution 1/5000
- **IF:** Dilution 1/50

Optimal dilutions/concentration should be determined by the end user.

Raised in : Mouse

Clonality : Monoclonal

Isotype : IgG

Purity : Purified Antibody

Storage buffer : Containing a final concentration of PBS/glycerol (V/V), 0.1% BSA and 0.01% Thimerosal.

Form : Liquid

Storage instruction : Store at -20°C or -80°C. Avoid repeated freeze / thaw cycles.

WESTERN BLOT ON RECOMBINANT PROTEIN

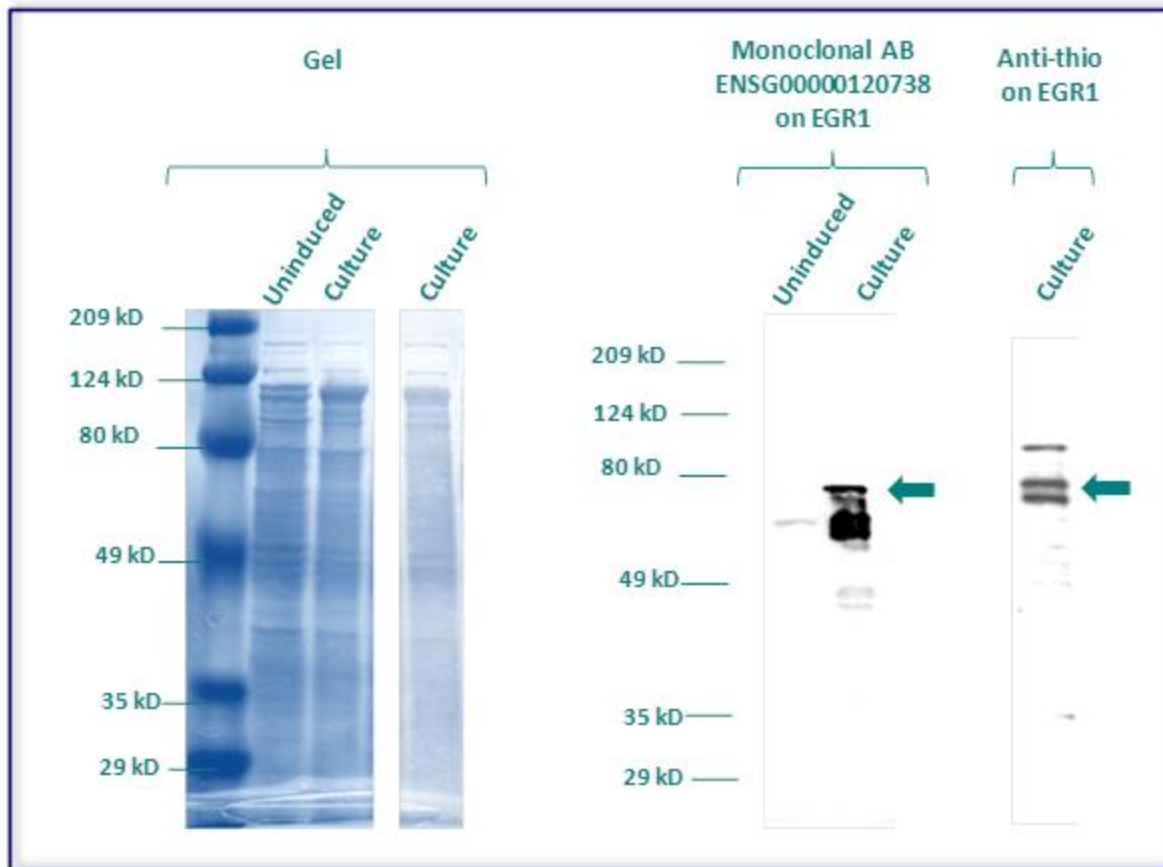
The monoclonal purified antibody ENSG00000120738 has tested at 1/5000 on uninduced (negative control) and induced culture of E.coli (one shot Top10 competent cells).

An anti-thio has been tested at 1/5000 on induced culture of E.coli (one shot Top10 competent cells) as a positive control.

Clone : 5E6D5C12, Isotype : G1; M; kappa

Plasmid name : pBAD-DEST49.

Molecular weight of EGR1 : 71kDa (57kDa + another 14kDa for the tag).



Gel concentration: 10%

Blocking: in 5% non-fat milk-PBST solution

1st Antibody: The antibodies are diluted in blocking buffer.

- Dilute the purified antibody ENSG00000124216 at 1:5000
- Dilute the anti-thio at 1:5000

60 minutes of incubation

2nd Antibody: The antibody is diluted in blocking buffer.

- Dilute the anti-Mouse IgG HRP conjugated at 1/20000
- 60 minutes of incubation

IMMUNOFLUORESCENCE ANALYSIS

Immunofluorescence analysis of Early growth response protein 1 (EGR1) expression in 6 cells lines (HELA, 293T/17, SAOS-2, SH-SY5Y, Skin 3,44). The monoclonal antibody ENSG00000120738 has been tested at 1/50.

Red staining : cytoskeleton (microtubules/ α -tubuline)

Blue staining : nucleus (Hoechst)

Green staining : anti- EGR1 antibody (purified)

Expected subcellular location : Nucleus

