

PRODUCT INFORMATION

Product name : CRM1-XPO1 antibody (Xenopus)

Product type : Primary antibodies

Description : Rabbit polyclonal to XPO1

Immunogen : 3 synthetic peptides (Xenopus) conjugated to KLH

Reacts with : XI

Tested applications : ELISA, WB & IF

GENE INFORMATION

Gene Symbol : XPO1

Gene Name : exportin 1 (CRM1 homolog)

NCBI protein ID : AAH70550.1

Entrez GeneID : 399087

Ensembl: ENSXETG00000002224

GenBank Accession number : BC070550

Xenbase ID : XB-GENE-993240

Swiss-Prot : Q6NS03

Molecular weight of XPO1 : 123kDa

APPLICATION NOTE

Recommended dilution :

- **ELISA:** Antibody specificity was verified by direct ELISA against the 3 immunogen peptides. A minimum titer of 1/40000 is determined for one of the three peptides. Appropriate specificity controls were run.
- **WB:** 1/500.

Optimal dilutions/concentration should be determined by the end user.

Raised in : Rabbit

Clonality : Polyclonal

Isotype : IgG

Purity : Crude serum, final bleed

Storage Buffer: 50% Glycerol containing a final concentration of 0.1% BSA and 0.01% Thimerosal.

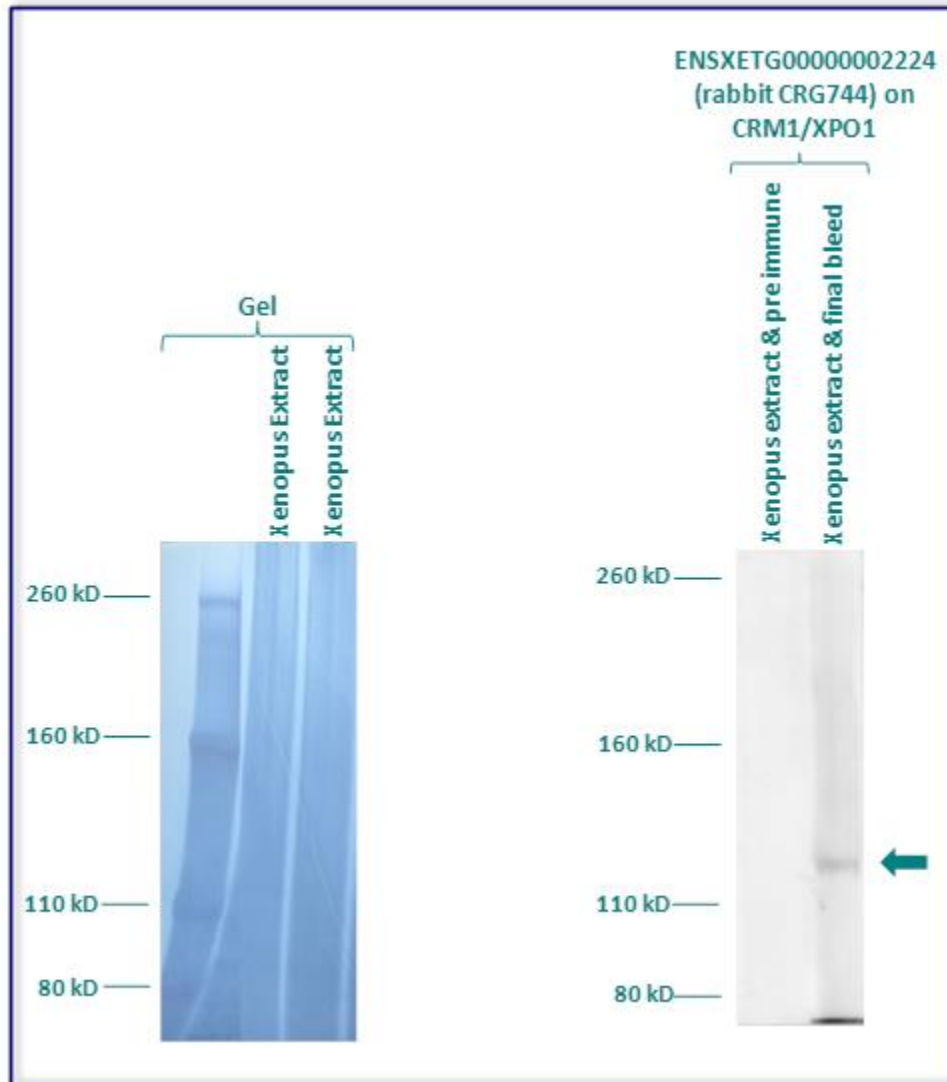
Form : Liquid

Storage instruction : Store at -20°C or -80°C. Avoid repeated freeze / thaw cycles.

WESTERN BLOT ON HUMAN CELL LINE

Western blot analysis of CRM1/XPO1 expression in protein extract of Xenopus. The serum ENSXETG00000002224 has been tested at 1/500.

Molecular weight of CRM1/XPO1 : 123kDa



Gel concentration: 5%

Blocking: 60 minutes at RT in 5% non-fat milk-PBST solution

1st Antibody: The antibody is diluted in blocking buffer.

- Dilute serum at 1:500 in Blocking buffer
- 60 minutes of incubation

2nd Antibody: The antibody is diluted in blocking buffer.

- Dilute the anti-Rabbit IgG HRP conjugated at 1/10000
- 60 minutes of incubation