

PRODUCT INFORMATION

Product name : CREBZF antibody

Product type : Primary antibodies

Description : Mouse monoclonal to CREBZF

Immunogen : 1 synthetic peptide (human) conjugated to KLH

Reacts with : Hu, Ms

Tested applications : ELISA, WB & IF

GENE INFORMATION

Gene Symbol : CREBZF

Gene Name : CREB/ATF bZIP transcription factor

Ensembl ID : ENSG00000137504

Entrez GeneID : 58487

GenBank Accession number : AF039942

Swiss-Prot : Q9NS37

Molecular weight : 37.1kDa

Function : Strongly activates transcription when bound to HCFC1. Suppresses the expression of HSV proteins in cells infected with the virus in a HCFC1-dependent manner. Also suppresses the HCFC1-dependent transcriptional activation by CREB3 and reduces the amount of CREB3 in the cell. Able to down-regulate expression of some cellular genes in CREBZF-expressing cells

Expected subcellular localization : Nucleus. Note: Colocalizes in promyelocytic leukemia protein nuclear bodies (PML-NB) with CREB3 and HCFC1.

Expected tissue specificity : In adults, expressed most abundantly in heart, liver and skeletal muscle, moderately abundant in kidney and pancreas, and barely detectable in lung. In fetal tissues, expressed most abundantly in kidney and very low amounts in heart, lung and liver.

APPLICATION NOTE

Recommended dilution :

- **ELISA:** Antibody specificity was verified by direct ELISA against the 1 immunogen peptide. A titer of 10 has been determined. Appropriate specificity controls were run.
- **WB:** Dilution 1/1000
- **IF:** Dilution 1/10

Optimal dilutions/concentration should be determined by the end user.

Raised in : Mouse

Clonality : Monoclonal

Isotype : IgG

Purity : Purified Antibody

Concentration: 2mg/ml

Storage buffer : Containing a final concentration of PBS/glycerol (V/V), 0.1% BSA and 0.01% Thimerosal.

Form : Liquid

Storage instruction : Store at -20°C or -80°C. Avoid repeated freeze / thaw cycles.

WESTERN BLOT ON RECOMBINANT PROTEIN

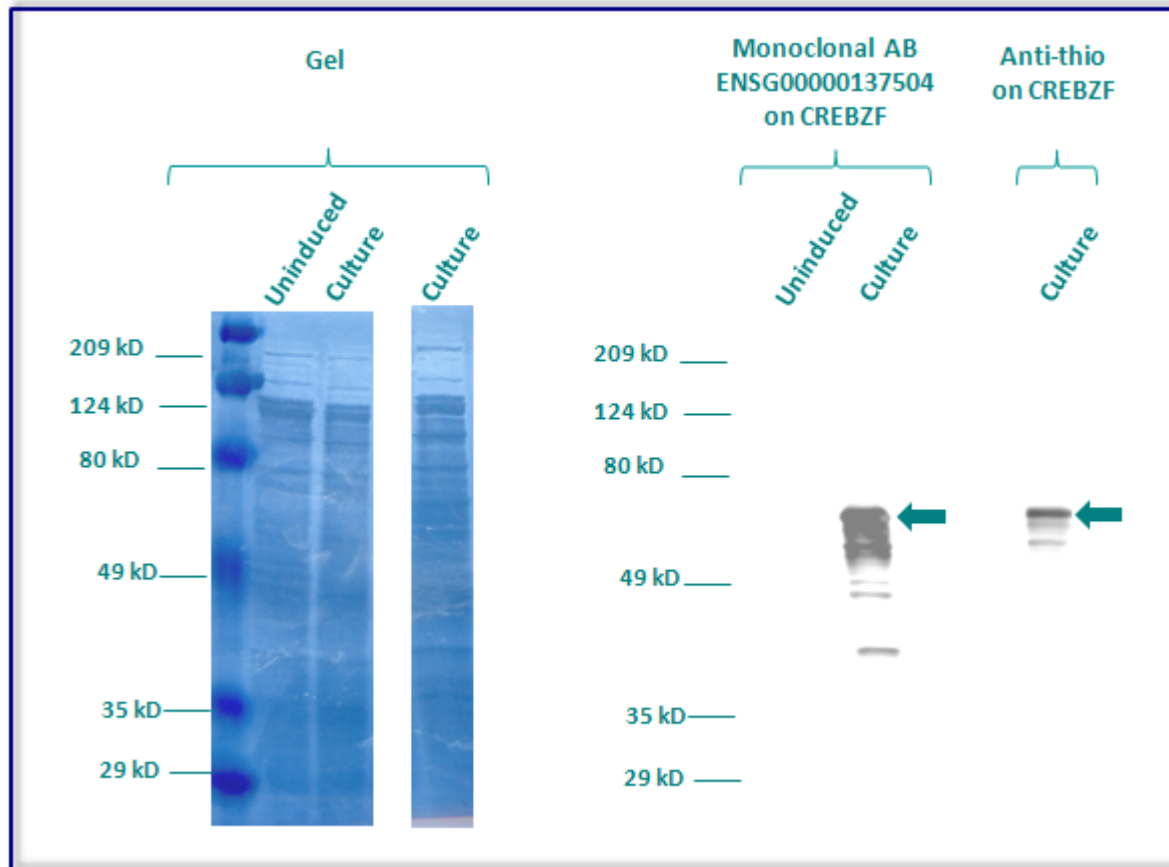
The monoclonal purified antibody ENSG00000137504 has tested at 1/1000 on uninduced (negative control) and induced culture of E.coli (one shot Top10 competent cells).

An anti-thio has been tested at 1/5000 on induced culture of E.coli (one shot Top10 competent cells) as a positive control.

Clone : 3G1D10C10, Isotype : G1; kappa

Plasmid name : pBAD-DEST49.

Molecular weight of CREBZF : 51.1 (37.1kDa + another 14kDa for the tag).



Gel concentration: 10%

Blocking: in 5% non-fat milk-PBST solution

1st Antibody: The antibodies are diluted in blocking buffer.

- Dilute the purified antibody ENSG00000137504 at 1:1000
- Dilute the anti-thio at 1:5000

60 minutes of incubation

2nd Antibody: The antibody is diluted in blocking buffer.

- Dilute the anti-Mouse IgG HRP conjugated at 1/10000
- 60 minutes of incubation

IMMUNOFLUORESCENCE ANALYSIS

Immunofluorescence analysis of CREB/ATF bZIP transcription factor (CREBZF) expression in 6 cells lines (HELA, 293T/17, Capan-2, SAOS-2, SH-SY5Y, Skin 3,44). The monoclonal antibody ENSG00000137504 has been tested at 1/10.

Green staining : cytoskeleton (microtubules/ α -tubuline)

Blue staining : nucleus (Hoechst)

Red staining : anti- CREBZF antibody (purified)

Expected subcellular location : Nucleus

Note: Colocalizes at punctate nuclear structures with CREB3 and HCFC1

Expected tissue specificity : In adults, expressed most abundantly in heart, liver and skeletal muscle, moderately abundant in kidney and pancreas, and barely detectable in lung. In fetal tissues, expressed most abundantly in kidney and very low amounts in heart, lung and liver

